



# OCULAR

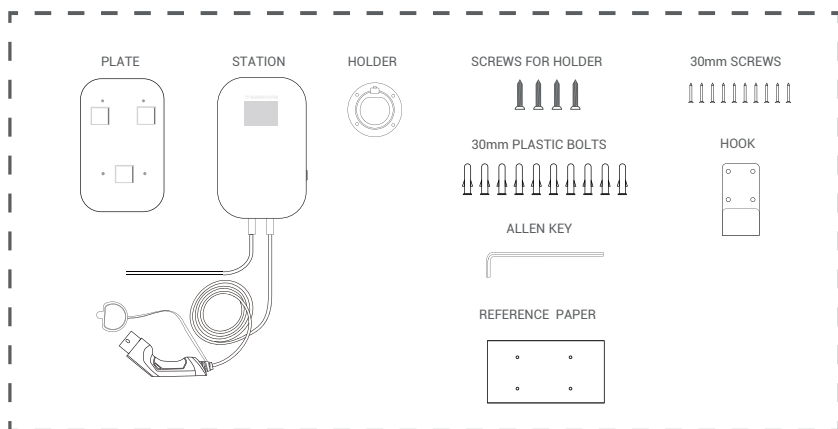
---

## User Guide

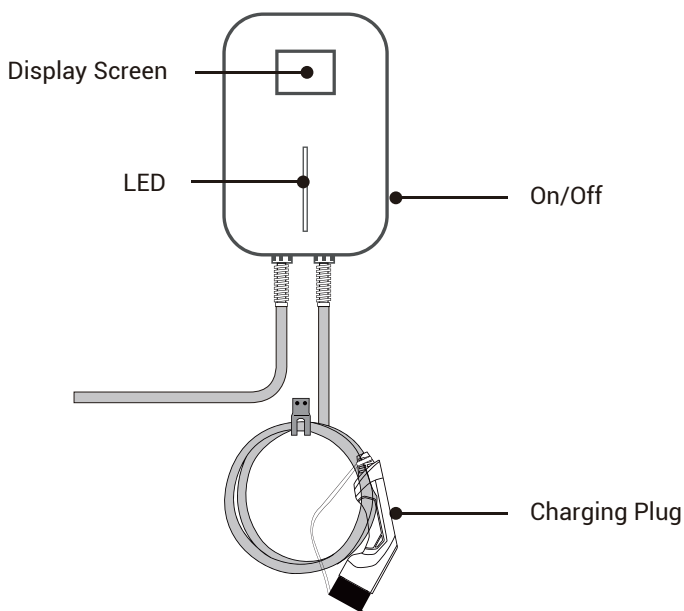
ENGLISH



## Accessories of Tethered Model



## Station Overview

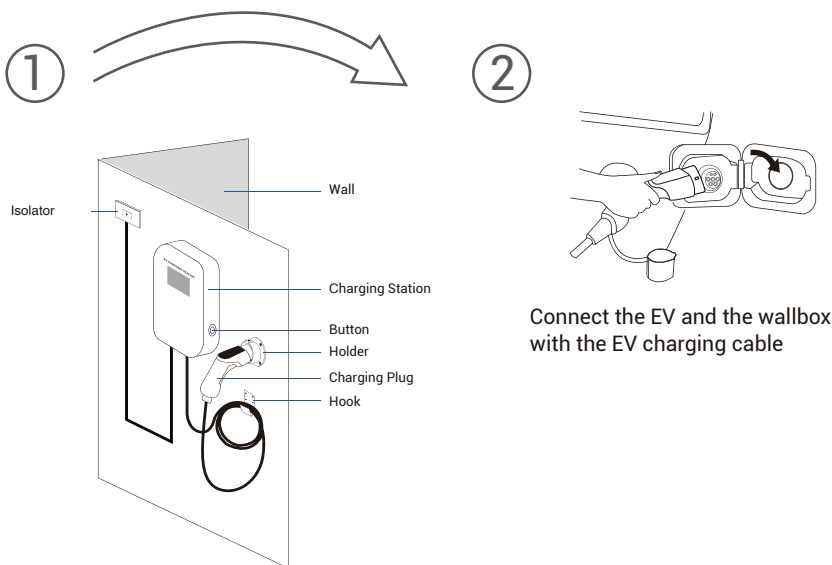


## Level 2 EV Charging Station

Phase Mode: Single Phase  
 Installation Method: Wall/Stand  
 Certificate: CE, TUV, RCM  
 IP Rating: IP66  
 Rated Voltage: 230VAC +/- 10%  
 Rated Current: 32A  
 Maximum Power: 7.4 kW  
 Ambient External Temp: -25°C ~ +55°C  
 Enclosure Material: ABS+PC alloy

Phase Mode: Three Phase  
 Installation Method: Wall/Stand  
 Certificate: CE, TUV, RCM  
 IP Rating: IP66  
 Rated Voltage: 380VAC +/- 10%  
 Rated Current: 32A  
 Maximum Power: 22 kW  
 Ambient External Temp: -25°C ~ +55°C  
 Enclosure Material: ABS+PC alloy

## Instruction for Use

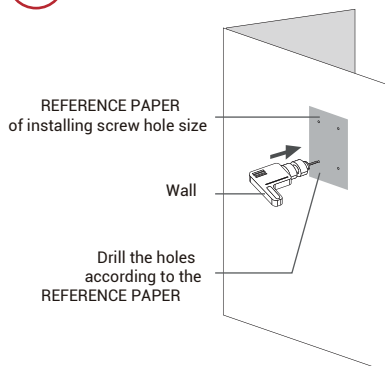


Make sure the wallbox is connected to power

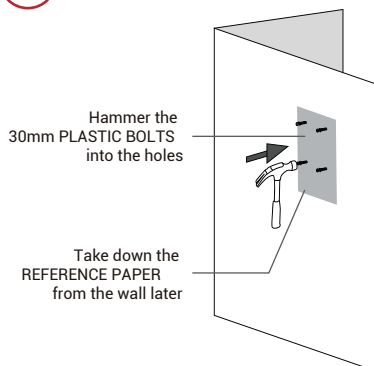
◆ Hang the cable on the hook when it is not in use

# Installation Guide

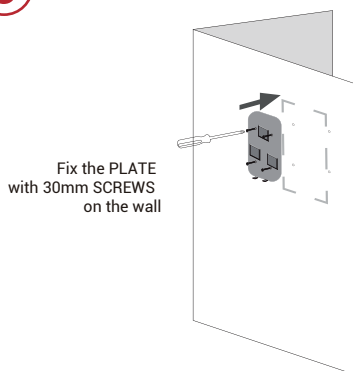
①



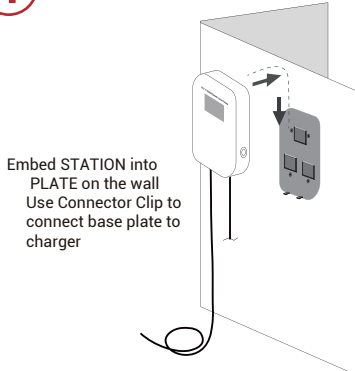
②



③



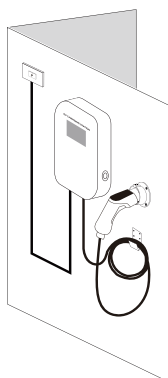
④



⑤

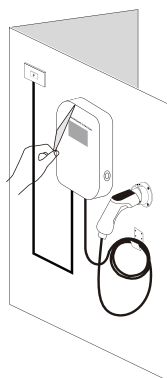
This is the final completion pic, you can put the HOOK and HOLDER anywhere you need

The cable can be hung on the HOOK and HOLDER



⑥

Tear off the protector




**Note: Power cables must be crimped with suitable ferrules otherwise product warranty will be voided**

# Illustration of Screen and LED

EV AC Charger

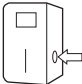
Start-up screen  
(the version no. is for reference only)

EV Charger

  
Connect the Charging Connector  
22.8 C


Wait for inserting the plug

EV Charger

  
Press The Button  
or Use the App  
22.8 C

Wait for identification

EV Charger

  
WAITING  
22.8 C

Wait for the car to be ready


EV Charger

0.0 kW

L1:220V 0.00A

L2:220V 0.08A


L3:220V 0.08A



00:00:06 0.00Kwh 23.7 C

During charging process

EV Charger

  
Disconnect the Charging Connector  
00:10:00 0.00Kwh 22.8 C

Stop charging and wait for pulling out the plug

	IDLE	CONNECTED	CHARGING	FINISHED	ERROR
Instruction of LED Status	<div><div></div><div>OFF</div></div>	<div><div></div><div>Continuous light</div></div>	<div><div></div><div>Rolling</div></div>	<div><div></div><div>Continuous light</div></div>	<div><div></div><div>Red flashing</div></div>

**Note:** The Ocular LTE Plus will automatically restart when minor problems occur.

For serious failures, the system cannot automatically recover. In order to remind user of this failure, the system will automatically countdown 10 seconds to restart.

## Safety Warning

Failure to follow instructions may result in danger!

- ▲ Regularly check whether the charging station has visible damage.
- ▲ Make sure that all safety facilities are available at all times and are tested regularly to ensure they can operate normally. Visit [ocularcharging.com.au](http://ocularcharging.com.au) for a yearly maintenance check according to Australian standards.
- ▲ If a ground fault occurs, it must be assumed that the cable carries voltage. Please confirm that there's no high-voltage power in the system before inspecting the charging station.
- ▲ Persons who install and use charging stations must obey the principles and regulations mentioned to ensure personal and equipment safety.
- ▲ Before powering on the device, please confirm that the device is properly grounded to avoid unnecessary accidents.
- ▲ All tools' unnecessarily exposed metal parts should be insulated to prevent them from touching the metal frame to avoid short circuits.
- ▲ Do not modify, retrofit, or change any part by yourself under any circumstances.
- ▲ To ensure the service life and stable operation of the charging station, the operating environment should be kept clean as possible with a relatively stable temperature and humidity. The charging station must not be used in a flammable environment or environments with volatile gas.
- ▲ Be sure to confirm that the input voltage, frequency, circuit breakers and other conditions of the device meet the specifications before the device is powered on

## Maintenance

Ocular LTE Plus is only recommended for use in residential applications and use outside of this area (i.e. for commercial application) is outside of warranty.

In order to ensure the normal service life of the charging station and reduce risk, maintenance must be performed every 12 months. The maintenance and installation of the equipment must be completed by licensed electricians with. Visit [ocularcharging.com.au](http://ocularcharging.com.au) to book your service.

The product should be placed at an ambient temperature of  $-25^{\circ}\text{C}\sim+55^{\circ}\text{C}$  in relative humidity of no more than 95%. The air should not contain acids, alkalis, or other corrosive and explosive gases.

Ocular Charging Stations are subject to stringent quality inspections. From the day of purchase, any problem quality can be reflected to the dealer within two years.

Any direct damage or malfunction caused by neglect, incorrect use, installation, usage, repair by the users or natural damage are not covered by the warranty.

MANUFACTURER  
Ocular Charging

[ocularcharging.com.au](http://ocularcharging.com.au)  
[sales@ocularcharging.com.au](mailto:sales@ocularcharging.com.au)







MANUFACTURER  
Ocular Charging

[ocularcharging.com.au](https://ocularcharging.com.au)  
[sales@ocularcharging.com.au](mailto:sales@ocularcharging.com.au)

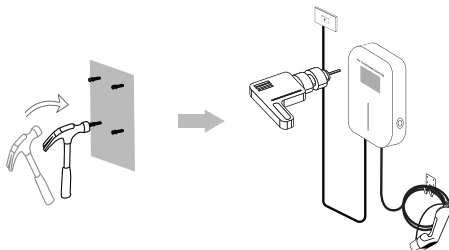
# OCULAR

## LTE PLUS



# Welcome to your Ocular LTE PLUS

Scan here to check the quick installation guide.



**WARNING!** This product shall only be installed, repaired or serviced by an authorised electrician. All applicable local, regional and national regulations for electrical installations must be respected.

---



IOS

Android



EVSEMaster

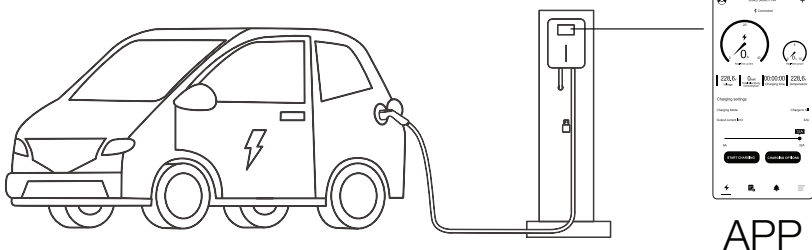
You can scan here to download EVSE Master APP.

## Enjoy your daily charging.

Scan here for user manual and FAQ.



We have gathered all of the user manuals and technical documents here. And you will also find answers to the most common questions we receive from our private customers.



A smart choice for the environment!

OCULAR

CHARGE WITH VISION